



WFCP



Postsecondary
International
Network (PIN)

W E L C O M E T O
LESSONS FROM THE PANDEMIC: RE-
ENGAGEMENT
W E B I N A R

JUNE 24, 2021

6:00 p.m. - 7:00 p.m.
EST



INTRODUCTIO N



Phil Ker
Moderator
Executive Director, Postsecondary
International Network



Matt Gotschall
Speaker
President, Central
Community College



Judith Morris
Speaker
President and CEO,
Lambton College



Lui Hokoana
Speaker
Chancellor, University of
Hawai'i Maui College



WFCP



Postsecondary
International
Network (PIN)



**ALASKA
(USA)**

CANADA

ONTARIO

NEBRASKA

**HAWAIIAN ISLANDS
(USA)**

UNITED STATES

SPEAKER #1



Matt Gotschall, PhD

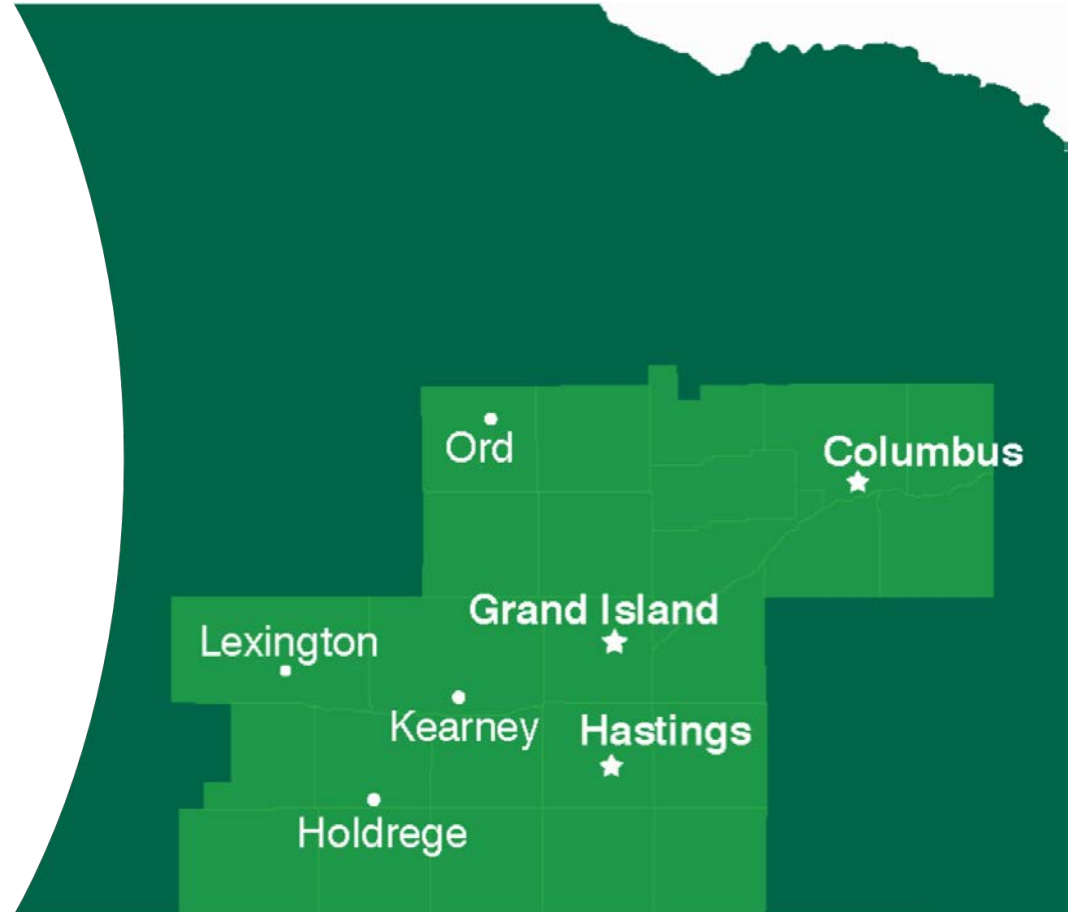
College President

Central Community College in Nebraska, USA



CENTRAL COMMUNITY COLLEGE

- Rural communities
- Approximately 20,000 total enrollment
- Academic Transfer, Business, Skilled & Technical Sciences, Nursing and Health programs
- 94% graduates stay in CCC service area for work or continuing education
- 2,076 awards (associate degree, diploma, certificates)



WFCP



Postsecondary
International
Network (PIN)

CCC'S PANDEMIC TIMELINE

March 6, 2020: First CCC Covid Crisis Team meeting – reoccurring weekly to present time.

March 30, 2020: Remote instruction implemented – technical and health labs continue under restrictions.

April 13, 2020: All non-essential faculty and staff work remotely until May 8, buildings closed.

May 26, 2020: Summer session begins – all remote instruction with limited options for in-person instruction.

July 23, 2020: Announcement of in-person fall semester courses with expanded remote options.

Sept. 9, 2020: Announcement of more in-person spring semester courses and less remote options.

January 4, 2021: All faculty and staff begin returning to campus at least half time. Vaccines scheduled to begin in early March.

May 1, 2021: All employees back on campus full-time with documented exceptions. Majority of essential employees voluntarily fully vaccinated.

May 24, 2021: Face covering requirement lifted in campus buildings. Summer sessions begin.

June 1, 2021: State of Nebraska declares end of both emergency declaration and mandatory directed health measures. “Regular” fall 2021 scheduled to begin in August.



WFCP



Postsecondary
International
Network (PIN)

WHAT WORKED

- Cross-functional crisis team.
- Regular survey/input from faculty and staff. Communication with students.
- IT support for remote delivery and services – faculty and support staff.
- Cooperation with local health districts, area secondary and post-secondary schools, and government.
- Prioritizing essential programs and student services.
- Off-campus support for student housing.

WHAT DID NOT WORK

- Traditional committees and lengthy time for decisions.
- Trying to keep everyone happy.
- Reliance on simulations and videos for technical/hands-on programs.
- Reliance on pre-enrollment assessment testing for English and math placement decisions.



WHAT WE LEARNED

Keep Teaching, Keep Learning, Keep Supporting, Keep Financially Solvent

- Expanded software, simulations and customized video but in-person experiences even if limited size and scope.
- Expanded student recruitment, tutoring, counseling to students.
- Re-evaluation of costs of essential programs, services and delivery.
- In-person interactions matter at two-year community colleges!



KENSEY MILLER

Hometown: Grand Island, NE



AWARDS

Associate of Arts Degree
Academic Transfer



WHAT WE LEARNED

Adjust Traditional Practices

- Eliminated mandatory assessment prior to enrollment and English and math placement.
- Eliminated need for in-person enrollment, registration & advising.
- Eliminated proctoring options and allow some remote labs and clinicals.
- Eliminated majority of in-person meetings, conferences and travel.





WFCP



Postsecondary
International
Network (PIN)

slido

Audience Q&A Session

 Start presenting to display the audience questions on this slide.

SPEAKER #2

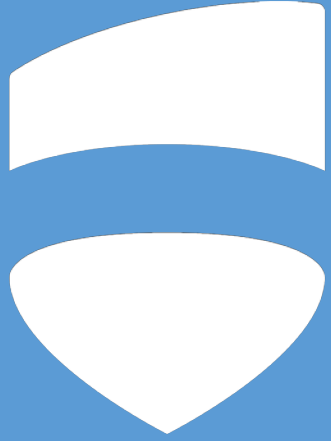


Judith Morris

President and CEO

Lambton College, Sarnia, Ontario Canada





Lambton College

Harnessing the momentum
of the pandemic



- Main campus located in Sarnia, Ontario, Canada
- 3,600 full-time students
- 2,400 domestic & 1,200 international
- Increasing to 2,400 international
- Two partner campuses in Greater Toronto Area:
6,000 international students
- #1 research college in Ontario, #2 in Canada



ACADEMICS

What didn't work



Initial inconsistent virtual course development



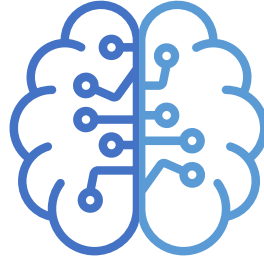
100% virtual delivery



Fully asynchronous classes



Inflexible testing integrity tools



What did



Standardizing virtual course platforms



Hybrid delivery



Minimum one synchronous hour



No exam week and new scheduling processes



WFCEP



Postsecondary
International
Network (PIN)

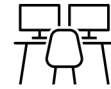
STUDENT SERVICES



What didn't work



Distributing iPads vs. laptops



Remote learning for many
Indigenous students

What did



Hybrid student service
delivery



Indigenous Study Hubs in local
First Nations communities

RESEARCH



What didn't work:

Initially faltered as business and industry partners shifted focus to COVID-19



What did:

Shifted own focus to COVID-19, attracting new partners and projects



What else did:

Heightened focus on local projects to spur economic recovery



WFCP



Postsecondary
International
Network (PIN)

GENERAL COLLEGE OPERATIONS

What didn't work

- Virtual recruitment

What did

- Plan Ahead Committee & Rapid Response Teams
- Responsive and enhanced communication from senior managers & directors
- Minimizing faculty & staff reductions
- Remote work



Project Momentum

A post-COVID strategy to accelerate recovery and power the College and Community into Industry 5.0



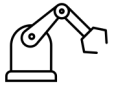
PROJECT M O M E N T U M



Humanization



Digitization



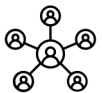
Automation



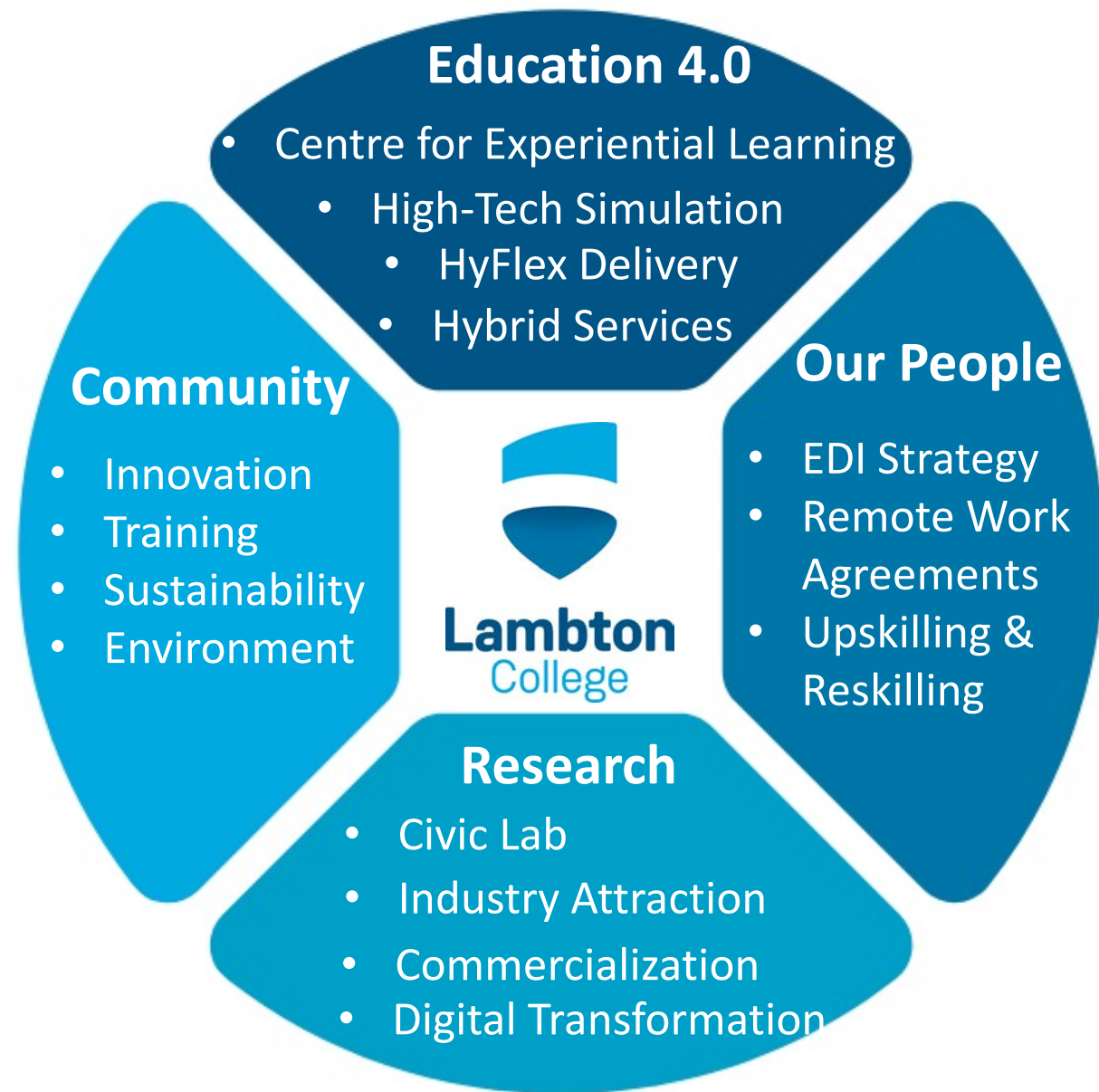
ICT



Data



Inclusivity



WFCP



Postsecondary
International
Network (PIN)

SPEAKER #3



Lui Hokoana
Chancellor
University of Hawai'i Maui College





UNIVERSITY of HAWAII®
MAUI COLLEGE

Don't Get Ahead of Yourself



A stylized map of the Hawaiian Islands is shown against a background of a textured, light blue-green map. The islands are represented as dark grey silhouettes. Maui is highlighted with a red dot, and other islands like Molokai and Lanai are marked with white dots. The background map features a compass rose and grid lines.

About Maui College

- Part of the 10 Campus University of Hawai'i System
 - Three Thousand Students
 - Serve a tri-isle county
Maui, Moloka'i and Lāna'i
-
- Community College that offers Baccalaureate degrees
 - 23 Associate Degrees
 - Three Bachelors of Applied Science Degrees
 - Sustainable Science Mgmt
 - Applied Business and Information Tech
 - Engineer Technology



COVID-19 *and what we learned*

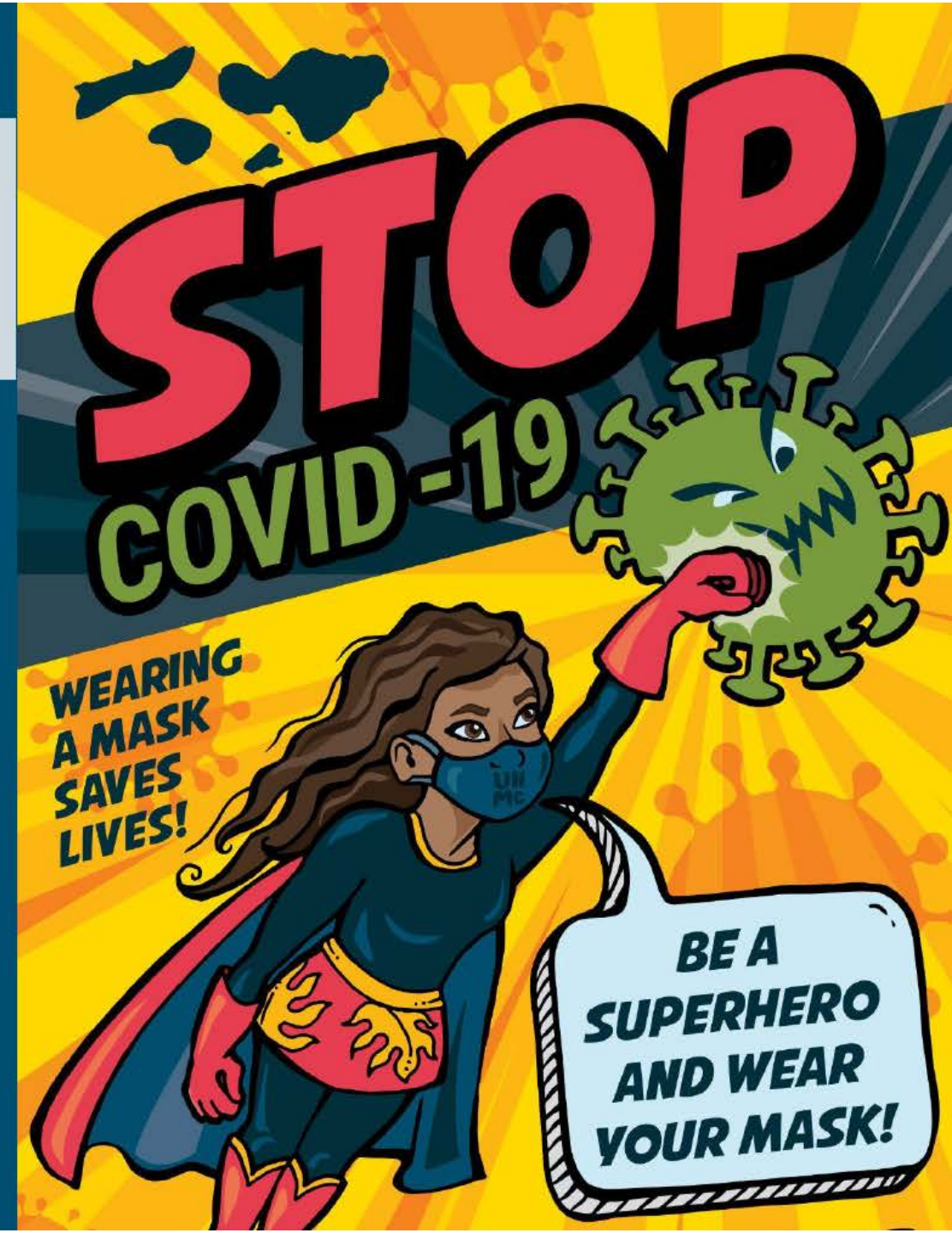
Similar timeline to CCC

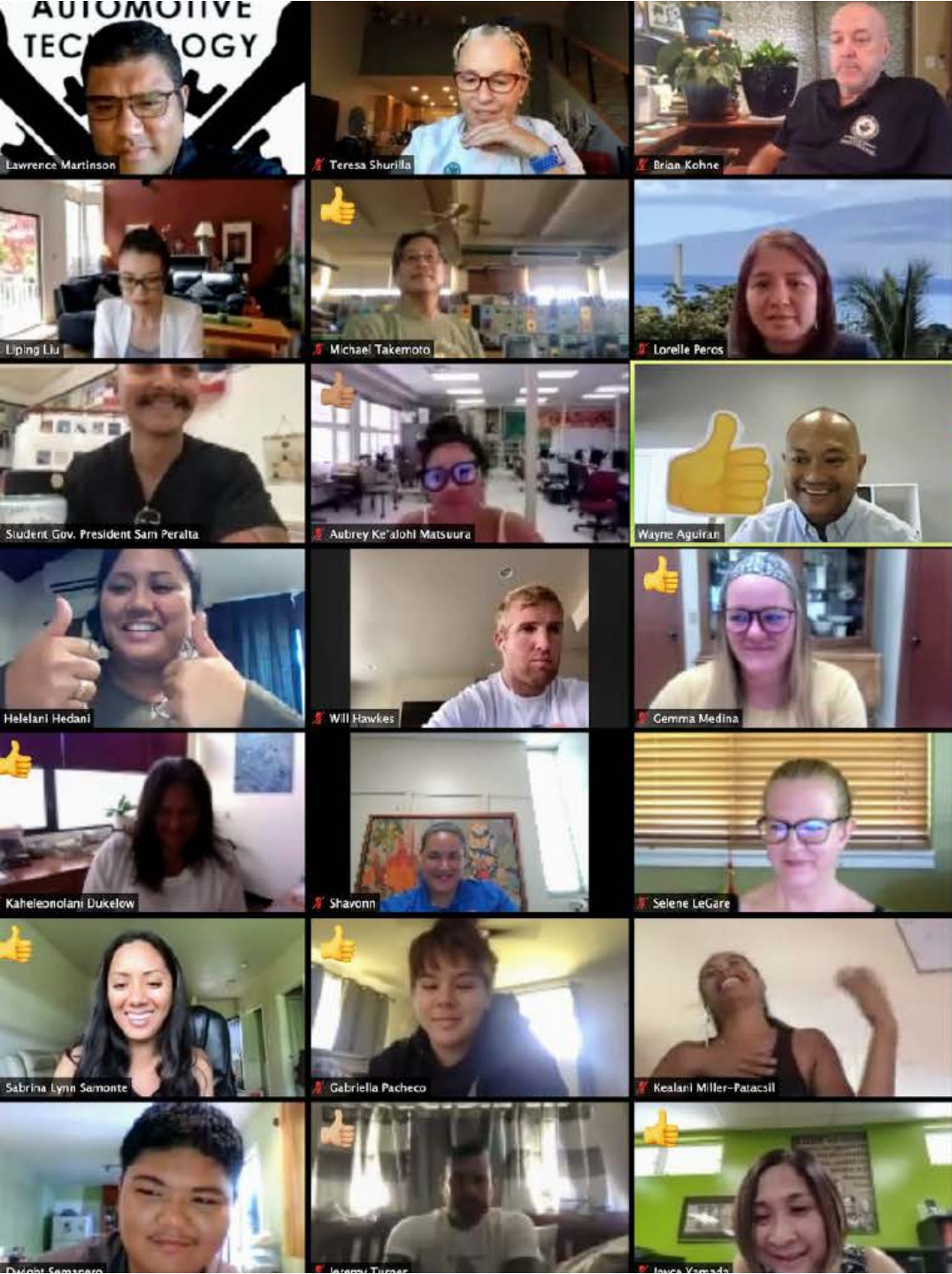
Student worker tests positive during spring break

- Made up protocols
 - Cleaning and Notifications
- **Follow the CDC guidelines**

Extreme Paranoia in the field

Daily and Weekly Communications
Monthly Zoom sessions





On-line Proctoring

- The package looks good but before looking outside look inside for the solution

Course Scheduling

- Break the “do it the same way” habit
Try not to overplan until you know for sure

Communications from UH System

- Called our people back to campus, next day UH President sends an email that staff can telework until January
- Don't get ahead of yourself wait for it (no matter how long it takes)



COVID Takeaways

We Defined Our Identity

- Health Center: Sentinel site since Jan. 2020
 - Nurse Practitioner wrote her dissertation on Pandemics
- College served as Contract Tracer and FEMA site for Maui County
- College served as Mass Vaccination site for Maui
 - Deployed 45 Nursing students to help with Vaccination
 - Culinary students fed clinic volunteers and the community
- Launched Water Quality Lab
 - Tested water pre & post COVID
- Processed 20,000 lbs of ulu for Hana Ranch





ONE MAUI NUI COLLEGE

Train Workforce

Address community needs through scholarship

Support and grow the Maui Nui economy



slido

Audience Q&A Session

 Start presenting to display the audience questions on this slide.

slido

What changes/improvements triggered by Covid-19 are your top priority for the future? What help do you need with implementing these?

 Start presenting to display the poll results on this slide.

THANK YOU FOR JOINING US

SAVE THESE DATES:

'Lessons from the Pandemic: Re-Invention' Webinar on August 26 at 6:00 PM EST

WFCP-PIN Leadership Summit in Maui, October 2021



A **recording of the webinar**
will be shared with you



Please complete our **feedback survey**
after the webinar



WFCP



Postsecondary
International
Network (PIN)

